

CASE STUDY

ADOA-ASET USES SMARTSHEET FOR IMPROVED DATA VISUALIZATION



SOFTWARE AND SERVICES

Smartsheet

OVERVIEW

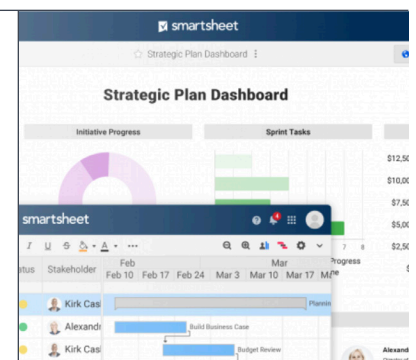
The Arizona Department of Administration employs the ASET-EPMO (Arizona Strategic Enterprise Technology - Enterprise Project Management Office) to run agency-wide projects and state-led initiatives, in order to meet their IT and Security needs. Smartsheet has provided the EPMO with a quick, lightweight tool and offers world-class support at a fraction of the cost. With Smartsheet, the EPMO was able to create project workspaces and set up their structures more efficiently and much faster. The collaboration possibilities have allowed a faster transfer of information and data between internal and external parties through the use of forms and calendar integrations. The reduced cost of Smartsheet and the reduced reliance on licenses, allowed the EPMO to spread the program through their agency without the burden of purchasing for each user. Additionally, this encouraged the agency to remove some of the redundant software and applications from their portfolio. In the first year of switching to Smartsheet, the EPMO identified an 80% cost-savings in terms of licenses and software.

“When I first started with the EPMO, I was tasked with running a project quite early. Being new, I had no idea where to start, what I needed, or even where I’d be keeping the project data. Then they introduced me to Smartsheet and the project templates the team created. Getting started has never been simpler.”

NASIR KUJENYA
IT PROJECT COORDINATOR

“ We transferred our agency’s project governance into Smartsheet and incorporated our prioritization list. Now that we’re keeping all our projects and documents in the same place, it saves us a great deal of time when we need to look for information. Most importantly, it gives our executives additional visibility.

HALEH FARHADI
MANAGER, ENTERPRISE PROJECT MANAGEMENT OFFICE



BENEFITS

- better data visualization
- integration with enterprise suite program
- reduced cost
- reduced reliance on licenses
- collaborate in real time
- automated workflows

“With dashboards being this easy to create, we can directly reflect projects’ success and highlight performance and progress. And with them updating in real time, we’ve lost the need for certain presentations, as the director can drop in at any time and see exactly where a project is.”

HALEH FARHADI
MANAGER, ENTERPRISE PROJECT
MANAGEMENT OFFICE

“Smartsheet has allowed our team to inform project teams and leadership in real time, of statuses and issues by utilizing the full range of features offered.”

ALI GUINN
IT PROJECT COORDINATOR

SAVING TIME AND MONEY:

Before Smartsheet, the Arizona Department of Administration was paying in excess of \$100,000 a year on project management software alone. Even more problematic, the project management software in place was particularly cumbersome and most of the team complained of its shortcomings. The software’s support was also minimal, with the technical side being slow to respond, and for the end-user, they often found the program unable to integrate seamlessly into other databases. These both resulted in lost time, as problems crawled to solutions and porting information seemed endless.

The EPMO relied on multiple tools and softwares, subject to change based on the projects’ needs. In turn, this created a lack of cohesion in processes and project management functions, as well as placing burdens on the time and financial resources the team was allotted.

By implementing Smartsheet, the ASET-EPMO was able to centralize their project management procedures, save time, and decrease licensing costs. Smartsheet is a platform that allows teams of all sizes to collaborate, manage, and report in real time to automate workflows and improve efficiencies.

IMPROVED REPORTING:

Increased visibility and reporting was a huge goal for the ASET-EPMO when searching for a project management tool. The team needed a solution that could integrate well with their enterprise suite program, as the state began to adopt Google. Smartsheet provided an answer to both issues, with the flexibility of its data reporting and tracking capabilities, as well as having Google Workspace Add-ons and uploaders. Realizing the full potential of their software, the office began to use Smartsheet to keep track and bring visualization to the state’s IT Strat Plan and their ASET Prioritization Lists, thus saving 25 hours a week normally spent on manual reporting.

CONCLUSION:

Adoption of Smartsheet as the team’s primary tool has helped cut costs and time, while maintaining high project completion rates. Moreover, this success led to the team being recognized by the Governor’s Office for the work towards continuous improvement. There is now higher project transparency as a Business Unit, reducing our reliance on additional product licensing and saving project managers an average of 1 hour a day.

The recent success of the EPMO and Smartsheet has been eagerly discussed in ADOA, with other teams and business units willing to adopt and implement the program. Thus, Smartsheet has helped transform the EPMO into a fast-acting, well-organized, collaboration-driven unit, that maximizes the value of data and reporting.